



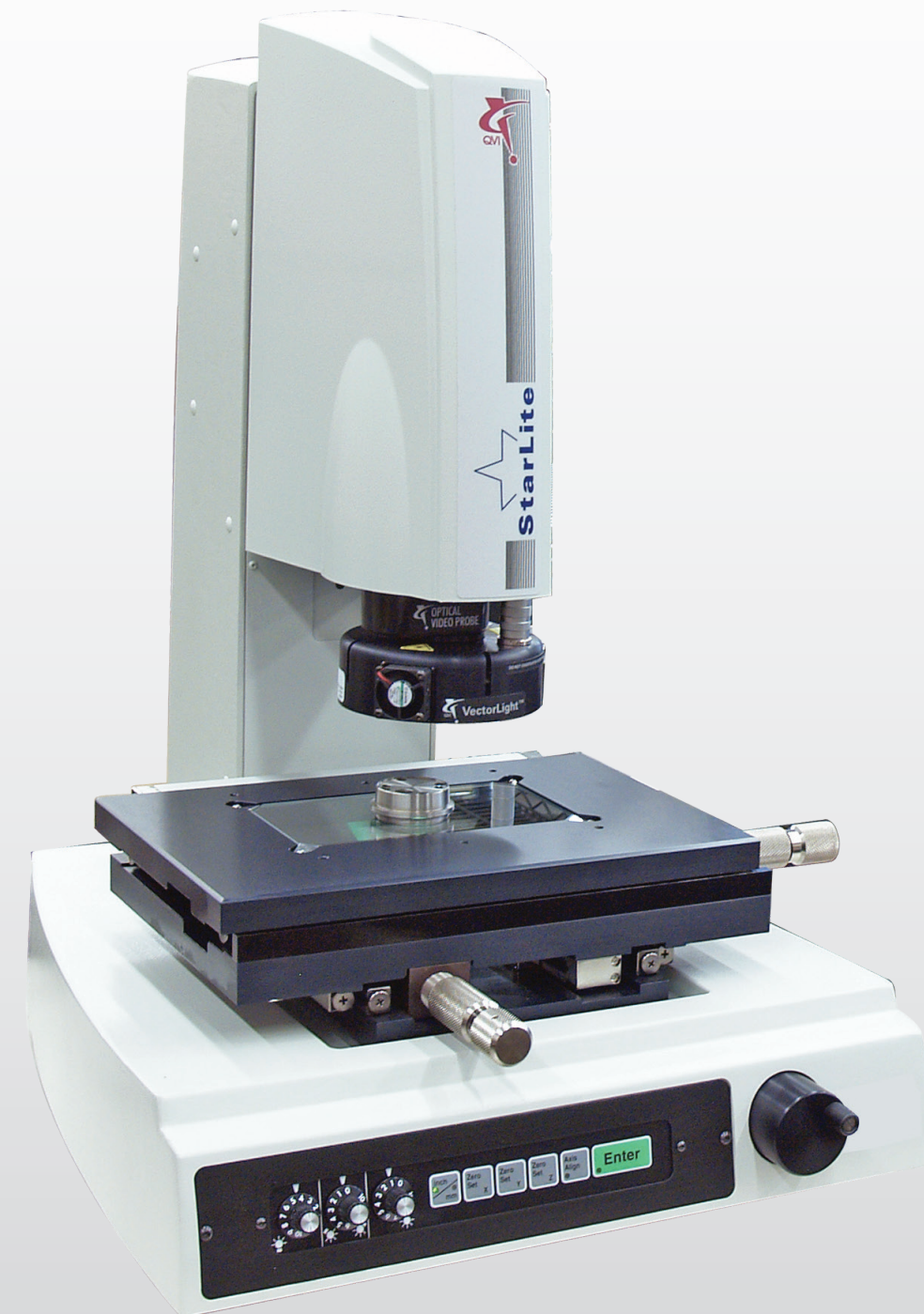
## QUALITY VISION INTERNATIONAL – Precision for People®

Quality Vision International (QVI®) is the world's largest vision metrology company. Founded in 1945, QVI is the world leader in optical, electronic and software technologies for vision and multisensor dimensional measuring systems.

Precision for People is more than just our slogan. It's our commitment to delivering our worldwide customers precision metrology systems, designed with the people who use them in mind. Precision for People - it's what we stand for.



For more info visit [www.qvii.com](http://www.qvii.com)



# StarLite

Family of Products



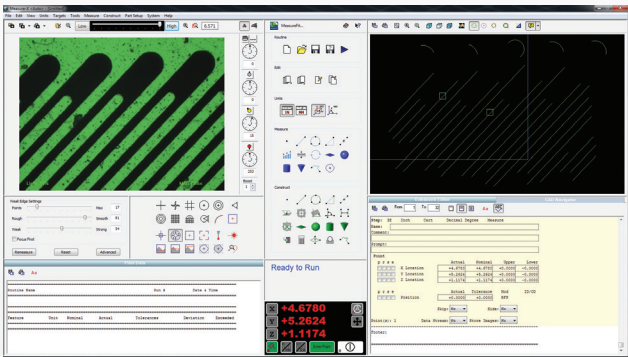
# Easy to Use Measurement Systems

## Automatic Measurements Made Simple

QVI® **StarLite** systems are the company's simplest precision measurement systems. StarLite combines versatile zoom optics with a digital color camera and easy to operate stages, for the ultimate in simplicity. Fully automatic software guides the operator to position the stages to each measurement location.

### StarLite Systems Feature:

- Precision mechanical bearing stages with 1.0 micron scales
- Standard LED backlight, multi-sector ring light and optional TTL surface light
- Full function Measure-X® - the world's most popular metrology software

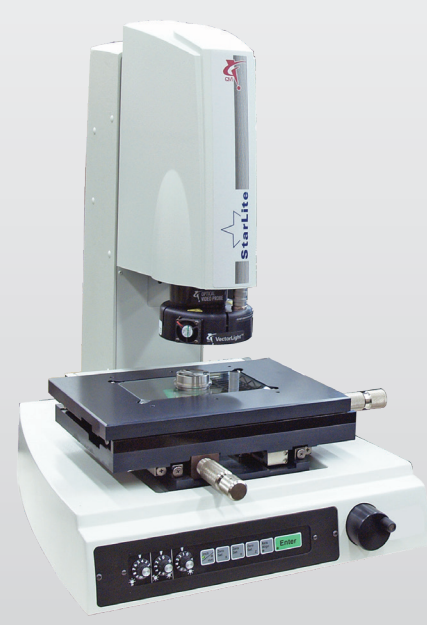


Fully automatic QVI Measure-X software provides full geometric measurement functions.



## StarLite 150

**StarLite 150** is a compact, 3-axis semi-automatic measuring system that is reliable, accurate and easy to use. Built on a rigid cast metal base and column, StarLite 150 provides solid, repeatable performance, even in harsh shop conditions.

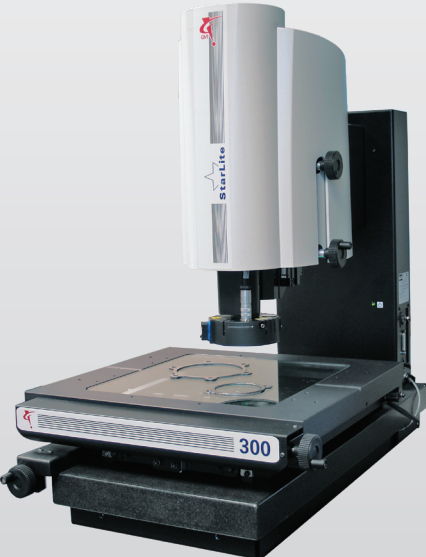


		Standard	Optional
Stage Travel (X,Y,Z)	Model		
	150	150 x 75 x 125 mm	
Stage Drive System		Precision compound X,Y stage with manual coarse and fine adjustment knobs; Manual Z axis with fine adjustment hand wheel	
Imaging Optics		Motorized 6.5:1 zoom lens system	Optional add-on lenses: 0.5X, 0.75X, 1.5X and 2.0X
Field of View		Low Magnification: 9.1 mm (diagonal) High Magnification: 0.6 mm (diagonal)*	
Metrology Camera		Digital megapixel color camera	
Illumination		All LED illumination, including backlight and VectorLight™ programmable 8-sector ring light	Full-LED VectorLight with integral square-on surface light and 6-ring, 8-sector oblique light

\*Field of view size at high optical / high digital magnification

## StarLite 200-300

**StarLite 200-300** models expand the available measurement capacity and take semi-automatic performance to the next level with solid granite bases for rigid, stable 3-axis measuring capability. Precision ball-slide stages with ergonomic controls make operation easy.



		Standard	Optional
Stage Travel (X,Y,Z)	Model		
	200	200 x 150 x 150 mm	
	250	300 x 150 x 150 mm	
	300	300 x 300 x 150 mm	
Stage Drive System		Precision compound X,Y stage with manual Z-axis focus motion with coarse and fine adjustment knobs	Motorized Z axis
Imaging Optics		Motorized 6.5:1 zoom lens system	Optional add-on lenses: 0.5X, 0.75X, 1.5X and 2.0X
Field of View		Low Magnification: 9.1 mm (diagonal) High Magnification: 0.6 mm (diagonal)*	
Metrology Camera		Digital megapixel color camera	
Illumination		All LED illumination, including backlight and VectorLight™ programmable 8-sector ring light	Full-LED VectorLight with integral square-on surface light and 6-ring, 8-sector oblique light

\*Field of view size at high optical / high digital magnification