



## QUALITY VISION INTERNATIONAL – Precision for People®

Quality Vision International (QVI®) is the world's largest vision metrology company. Founded in 1945, QVI is the world leader in optical, electronic and software technologies for vision and multisensor dimensional measuring systems.

Precision for People is more than just our slogan. It's our commitment to delivering our worldwide customers precision metrology systems, designed with the people who use them in mind. Precision for People - it's what we stand for.



For more info visit [www.qvii.com](http://www.qvii.com)



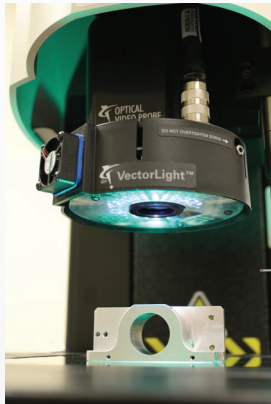
# SprintMVP

Family of Products

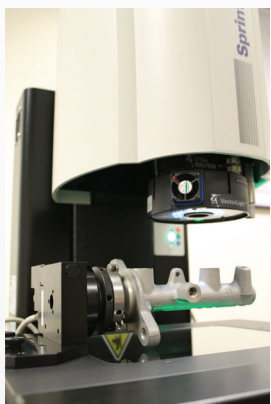
# Versatile Measurement Performance

## Productivity Made Simple

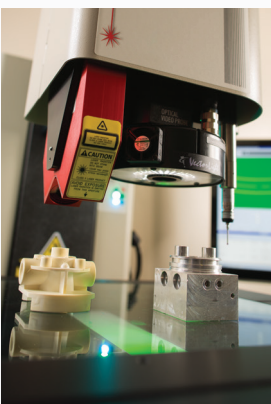
**SprintMVP** systems set the standard for fully automatic 3-axis measurement performance. Rugged granite construction, precision motorized stages and flexible zoom optics handle a wide range of measurement needs.



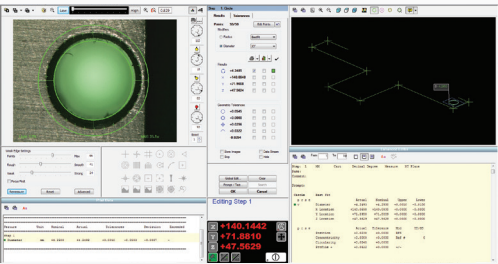
VectorLight™ programmable oblique illuminator highlights surface details from every angle.



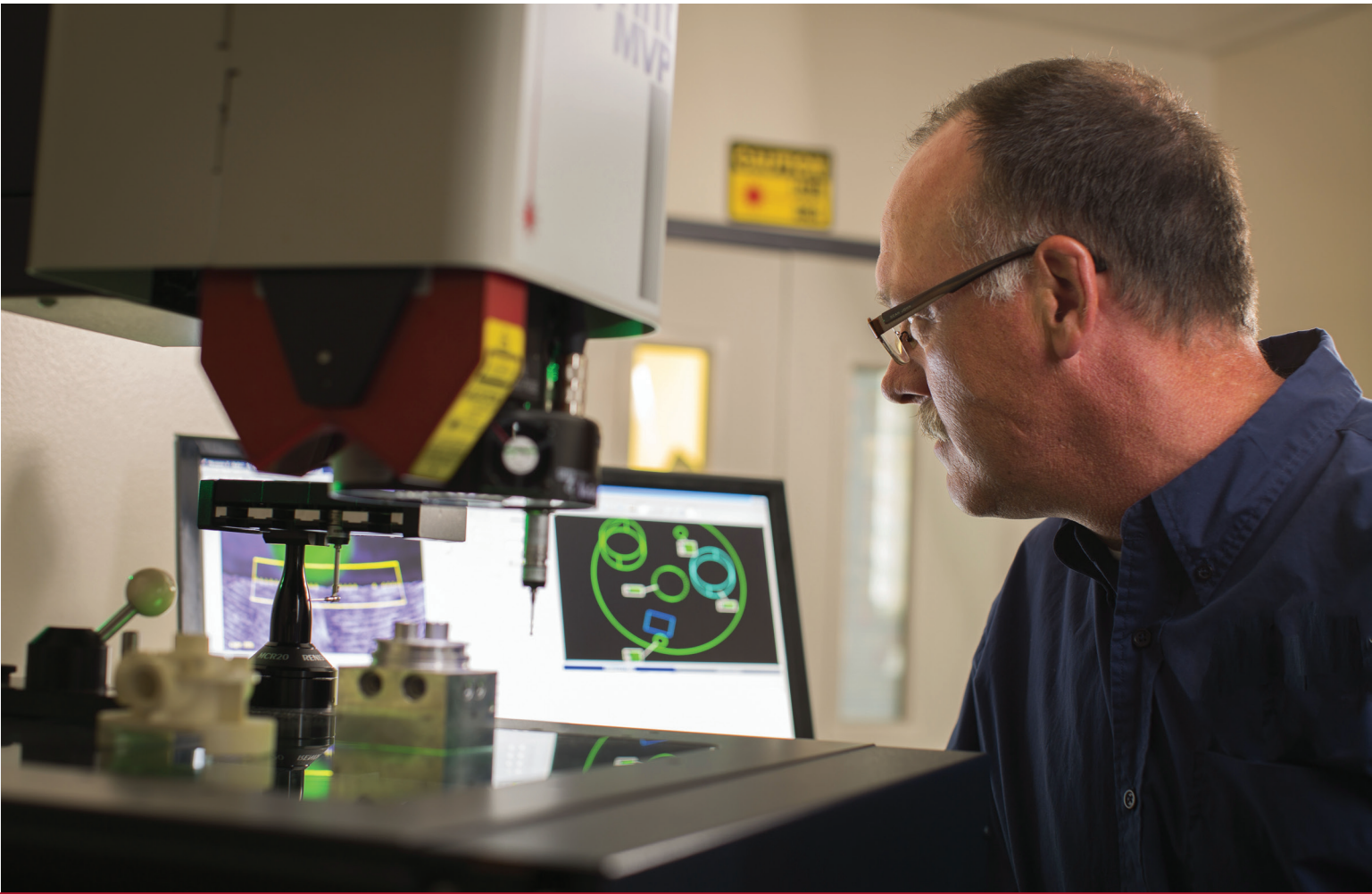
Optional rotary indexers automatically index parts for complete measurement of all features.



Optional DRS laser and touch probe offer additional sensor capability for complex measurements.



QVI® Measure-X® - The world's most popular metrology software, is standard on all SprintMVP systems.



## SprintMVP Benchtop Systems

**SprintMVP** benchtop models deliver high productivity on the workbench. With a full range of sensor options, fully automatic operation and powerful software, SprintMVP systems quickly add value to any manufacturing process. SprintMVP benchtop systems offer extended measuring ranges to accommodate a variety of parts.



		Standard	Optional
Stage Travel (X,Y,Z)	Model		
	200	200 x 150 x 150 mm	Extended Z axis 250 mm
	250	300 x 150 x 150 mm	Extended Z axis 250 mm
	300	300 x 300 x 150 mm	Extended Z axis 250 mm
Stage Drive System		Precision motorized XYZ stages with 3-axis joystick control	
Imaging Optics		Motorized 6.5:1 zoom lens system	Optional add-on lenses: 0.5X, 0.75X, 1.5X and 2.0X
Backtube		1X	0.67X or 2.0X
Field of View		Low Magnification: 9.1 mm (diagonal) High Magnification: 0.6 mm (diagonal)*	
Metrology Camera		Digital megapixel color camera	
Illumination		All LED illumination, including backlight, square-on surface light and VectorLight™ programmable 7-sector ring light	Full LED VectorLight with 8 sectors, Auxiliary fiber optic ring light
Sensors			DRS laser; TP20 touch probe
*Field of view size at high optical / high digital magnification			

## SprintMVP Large Capacity Systems

**SprintMVP** large capacity floor models extend measurement capability to large parts or large batches of smaller parts. SprintMVP floor models feature heavy-duty construction and stable materials for use in harsh shop-floor conditions.



		Standard	Optional
Stage Travel (X,Y,Z)	Model		
	400	450 x 450 x 150 mm	Extended X axis 600 mm; Extended Z axis 300 mm
	624	624 x 624 x 200 mm	Extended Z axis 300 mm
	1500	900 x 1500 x 200 mm	Extended Z axis 300 mm
	1550	1250 x 1500 x 200 mm	Extended Z axis 300 mm
	1552	1500 x 1500 x 200 mm	Extended Z axis 300 mm
Stage Drive System		Precision, motorized XYZ transport with 3-axis joystick control	
Imaging Optics		Motorized 6.5:1 zoom lens system	Optional add-on lenses: 0.5X, 0.75X, 1.5X and 2.0X
Backtube		1X	0.67X or 2.0X
Field of View		Low Magnification: 9.1 mm (diagonal) High Magnification: 0.6 mm (diagonal)*	
Metrology Camera		Digital megapixel color camera	
Illumination		All LED illumination, including backlight, square-on surface light and VectorLight™ programmable 7-sector ring light	Full LED VectorLight with 8 sectors, Auxiliary fiber optic ring light
Sensors			DRS laser; TP20 touch probe
*Field of view size at high optical / high digital magnification			