



Quality Vision International  
Precision for People®



c-vision

Video Contour Projector®

# The Best of Both Worlds

The **c-vision™** Video Contour Projector® combines the speed and accuracy of a video measurement system with the rugged capacity of an optical comparator to create the world's best shop floor measuring tool.

## Tough

Optical comparators are a mainstay of shop floor measurement. Their tough construction and big viewing screens make inspections fast and easy.

## Fast

Video measurement systems offer the accuracy and high speed of automatic measurement.

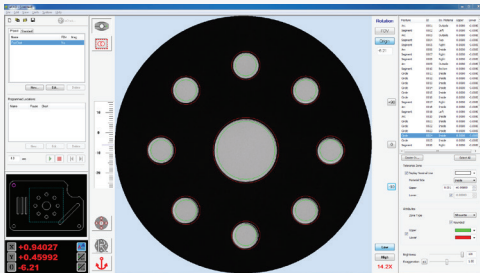
## Versatile

**c-vision** brings you the best of both worlds - the rugged, proven design of a profile projector and the speed and accuracy of a precision video measurement system. With 60% more magnification range than a standard comparator, you can view and measure parts up to 4 inches in size without any stage motion, and zoom in to 100x magnification to measure fine details. The optional swing away lamp house on the c-vision Floor Model allows for surface illumination of very large parts.

## Reliable

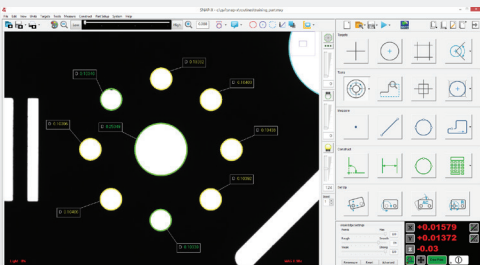
**c-vision** offers the quality construction and high reliability you expect from Quality Vision International - the leader in non-contact measurement systems for nearly 75 years.

## Powerful Software



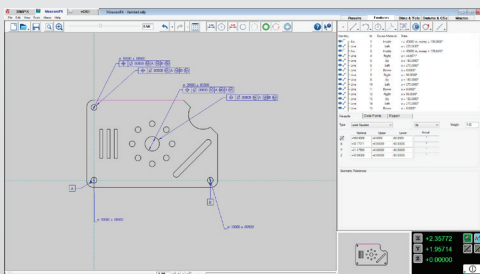
### vCAD

vCAD™ virtual chart gage software displays a CAD design or standard chart gage overlay, allowing easy comparison of the part image to its nominal design. Simply load the DXF CAD overlay or chart, align the part image, and begin inspection. vCAD couples the CAD and part images so they stay in alignment as you move the part.



### SNAP-X

SNAP-X™ software takes **c-vision** performance to the next level, providing completely automatic video measurements. SNAP-X can automatically measure entire parts with a single click. Use SNAP-X to create custom routines from CAD or using a sample part. Add nominals and tolerances for complete dimensional analysis.



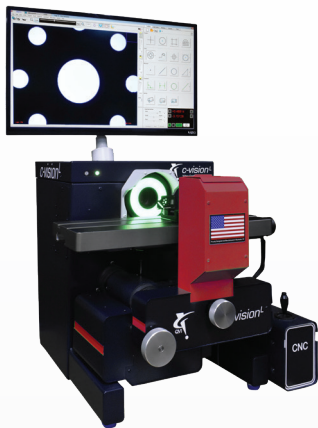
### MeasureFit

MeasureFit® integrates with SNAP-X to compare measured data points to CAD and apply GD&T to maximize your production process. MeasureFit helps solve complex XY profile fitting and GD&T analysis problems, and identifies trends and trouble spots in your manufacturing process. MeasureFit Plus includes integral SPC and reporting capabilities for complete dimensional analysis and documentation.

# A System to Fit Every Need

## c-vision Lite

Compact, easy to use, tri-magnification benchtop video contour projector



|                                    | Standard   | Optional                                |
|------------------------------------|--|---|
| XYZ Travel Range (in)              | 12 x 5 x 1.5   |   |
| Helix Angle Range                  | ±6.5° with pivoting worktable assembly and zero stop |   |
| Throat Clearance (in)              | 8  |   |
| Recommended Max Load Capacity (lb) | 45   |   |
| Field of View Size (in)            | Low Mag: 2   | Medium Mag: 1<br>High Mag: 0.5          |
| Field of View Accuracy (in)        | Low Mag: 0.0003                                      | Medium Mag: 0.0002<br>High Mag: 0.00016 |

## c-vision Floor Model

Ultimate, shop floor hardened, high capacity video contour projector



|                                    | Standard   | Optional   |
|------------------------------------|--|--|
| XYZ Travel Range (in)              | 15 x 9 x 2   | 18 x 9 x 2, with optional 10" Y                      |
| Helix Angle Range                  |  | ±7.5° with pivoting worktable assembly and zero stop |
| Throat Clearance (in)              | 16   |  |
| Recommended Max Load Capacity (lb) | 250  |  |
| Field of View Size (in)            | Low Mag: 3 (diagonal)<br>High Mag: 0.75 (diagonal) | Low Mag: 4 (diameter)<br>High Mag: 1.4 (diagonal)    |
| Field of View Accuracy (in)        | Low Mag: 0.0003<br>High Mag: 0.00016               |  |

# Innovative Optics Create Incredible Images

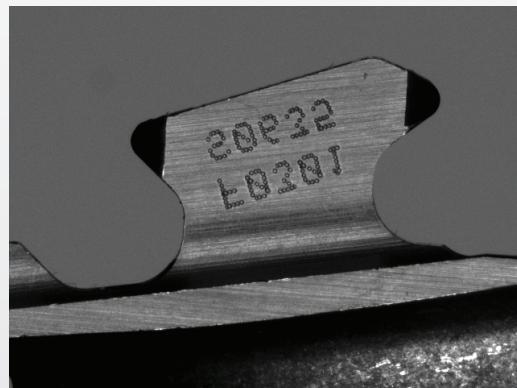
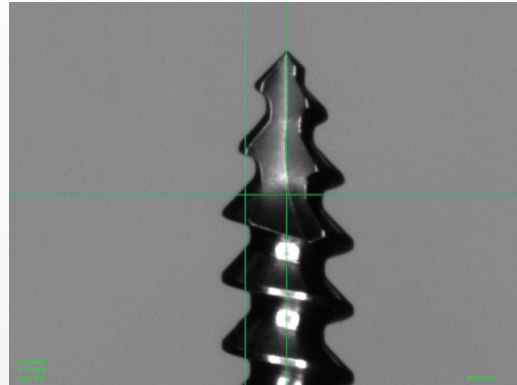
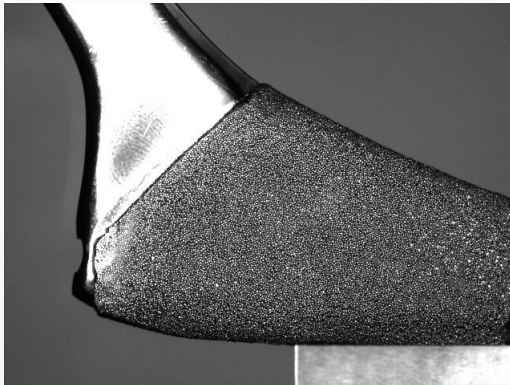
**c-vision™** multi-magnification, telecentric optical system offers the convenience of a standard large field of view, and the resolution to measure small features accurately.

The heart of **c-vision** optics is the oversized front receiving lens which creates the large field of view. The optics are fully telecentric, ensuring accurate size measurements throughout the field.

The QVI® digital megapixel camera measures the entire field of view in one snapshot, enabling dozens of features to be measured at once. Instantly available electronic zoom enables inspection of small features up-close.

TruLight® all-LED illumination sources are designed to complement the **c-vision** unique wide field optics. Backlight (and square-on internal surface lights available on **c-vision** Floor Model) fill the field of view with uniform, bright light to pick up the smallest details. The 8-sector programmable ring light highlights surface details, allowing measurements of features that standard optical comparators are unable to detect with conventional surface light.

For small feature sizes, high optical magnification is needed to achieve the optical resolution required for high accuracy measurement. All **c-vision** models switch to high magnification at the touch of a button. **c-vision** Floor Model includes industry proven automatic AccuCentric® compensation to ensure accuracy.



## QUALITY VISION INTERNATIONAL – Precision for People®

Quality Vision International (QVI®) is a world leader in vision metrology. QVI has been a pioneer in optical, electronic and software technologies for vision and multisensor measuring systems since 1945.

Precision for People is more than just our slogan. It's our commitment to delivering our worldwide customers precision metrology systems, designed with the people who use them in mind. Precision for People - it's what we stand for.

© 2018 Quality Vision International Inc. All rights reserved. Trademarks are the property of their respective owners. Printed in USA. Specifications for reference only and subject to change without notice. Refer to published datasheets for specifications. Publication Number 795189-1018

